

# Rotameter ; Variable area Flow Meter – Panel Mounting Purge Meter

Model : KCP - SO1 - B (정 유량변)

## OUT LINE

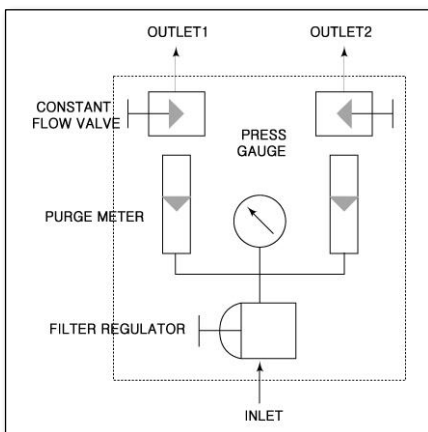
본 유량계는 감압변 및 Constant flow V/V을 Panel에 조합 부착 하여 관내 압력이 변화하여도 항상 일정 유량을 유지 시킴으로써 고정밀의 제어가 가능하며 1차압 및 2차압을 조절할 수 있으며 Single Type 및 Double type등 다양한 Model로 적용 가능하다.



## STANDARD SPECIFICATION

Type	: Secondary pressure variation control type (Dual loop)
Supply air	:Max. 9.9kg/cm <sup>2</sup> G
Primary press.	: To be adjusted to 0.6kg/cm <sup>2</sup> G higher than the maximum of secondary press
Secondary press.	: 0.6kg/cm <sup>2</sup> G -
Possible scale range	: Min. 0.1~1NR/Min. Max. 5~50NR/Min
Indication accuracy	: ±5% F.S
Control accuracy	: ±5% F.S
Process conn.	: Rc 1/4 thread Other threads on request
Installation	: Std. Wall/panel mount Opt. U bolt installation type

## BLOCK DIAGRAM OF SYSTEM



## DIMENTION

